

Date		Designed By	Nishant/Kunal
Revision	00	Prepared By	Harsh
Revision Particulars	Issued For Approval	Approved By	Robin Virani

Client/Developer :			
EPC Contractor :			
Consultant Name :			
Project Name			
Title	GTP of 1500V DC PV Solar Straight Inline Fuse Connector Male and Female combination without Fuse Link		
PROJECT NO		REV.	SHEET
DOC.NO		00	1 OF 3

Note:- All rights reserved. The documents contain proprietary information which is protected by copyright. No part of this documents may be reproduced, translated in computer language, or transmitted in any form whatsoever without the prior written consent to Elmex Electric Pvt Ltd, Vadodara



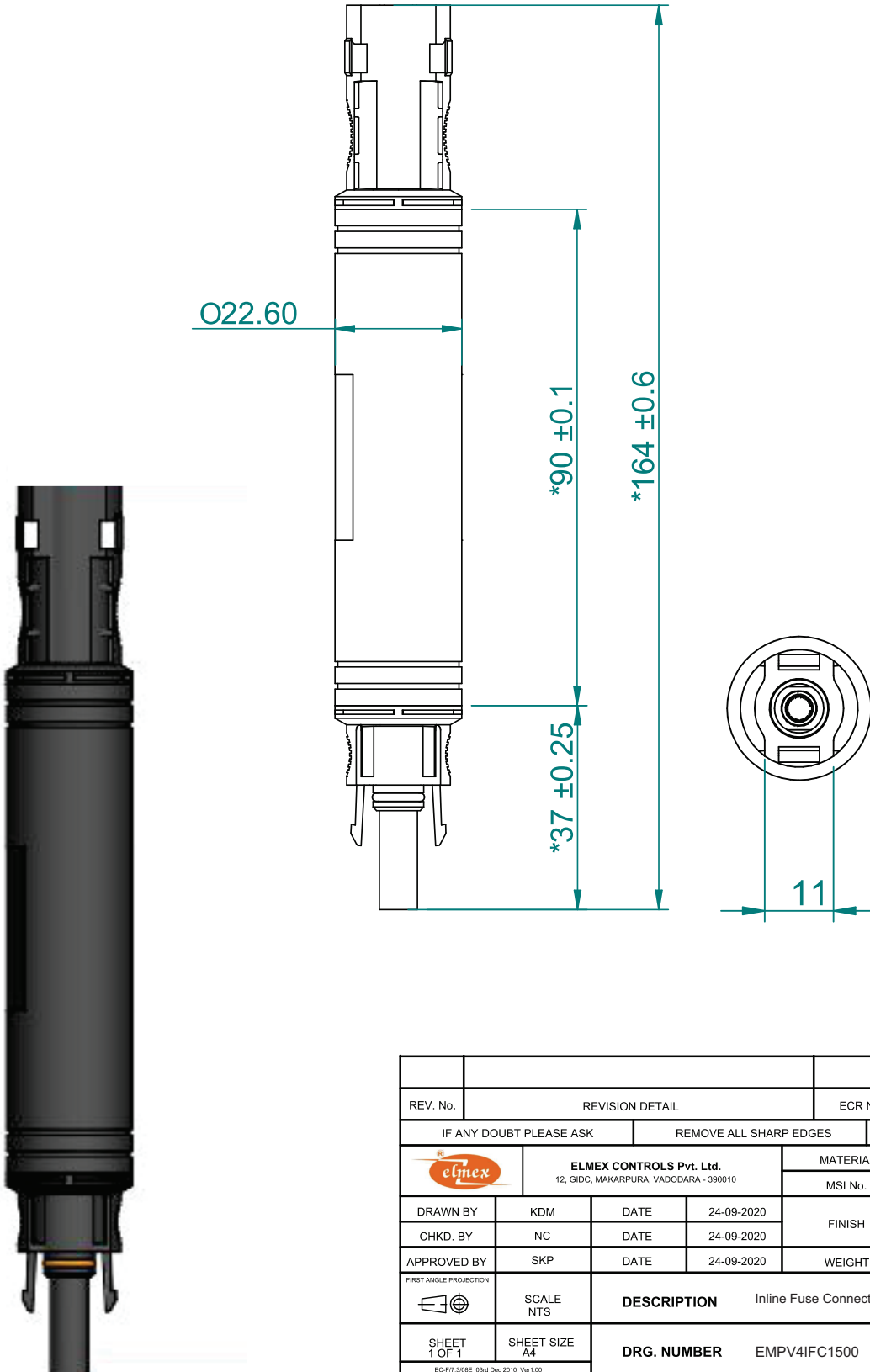
EMPV4IFC1500


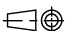
Sr.NO	Technical Parameters for EMPV4IFC1500	
1	Factory Inspection	Name of Supplier- Elmex Electric Pvt. Ltd. Factory Address- 134-135, GIDC ESTATE, POR - RAMANGAMDI, VADODARA 391243, GUJARAT, INDIA.
2	Product Partcode	EMPV4IFC1500
3	Rated Voltage	1500V DC
4	Rated Current (TUV)	30A
5	Rated Impulse Voltage	16kV
6	RMS withstand Voltage	8kV
7	Protection Class	Class II
8	Application Class	A
9	Flammability Class	UL94-V0
10	Insulating Material	NORYL 9406P PPE+PS
11	Pollution Degree	3
12	Degree of Protection	IP68 (Mated Condition)
13	Over voltage Category	III
14	Lower Ambient Temperature	-40°C
15	Upper ambient Temperature	+85°C
16	Upper Limit Temperature	+110°C
17	Suitable DC PV Cable Size	2.5 mm ² , 4 mm ² , 6 mm ²
18	Metal Contact Pin material	Copper with Tin Plating
19	Insertion Force	≤50N
20	Withdrawal Force	≥50N
21	Salt mist Spray Test	IEC60068-2-52, Severity 6
22	Locking System	Snap In
23	Tool require for Opening and Tightening	Part code:EPVOS-S 
24	Fuse Link Suitable Size	φ 10 x 85mm EPVFL1500 

* Do not connect Straight Inline Fuse Connectors directly in MPPT of String Inverter.

**Technical specifications may change in line with Technical Advances and industry standards.

1500V DC Straight Inline Fuse Connector



REV. No.	REVISION DETAIL				ECR No.	MODIFY BY	DATE	
IF ANY DOUBT PLEASE ASK			REMOVE ALL SHARP EDGES			ALL DIMENSIONS ARE IN "mm"		
		ELMEX CONTROLS Pvt. Ltd. 12, GIDC, MAKARPURA, VADODARA - 390010			MATERIAL			
					MSI No.			
DRAWN BY	KDM	DATE	24-09-2020		FINISH			
CHKD. BY	NC	DATE	24-09-2020					
APPROVED BY	SKP	DATE	24-09-2020		WEIGHT			
FIRST ANGLE PROJECTION				SCALE NTS		DESCRIPTION Inline Fuse Connector Male and Female Combination		
SHEET 1 OF 1	SHEET SIZE A4	DRG. NUMBER EMPV4IFC1500				REV A		
EC-F77-308RE_03rd Dec 2010_Ver1.00								