

Date		Designed By	Nishant/Kunal
Revision	00	Prepared By	Harsh
Revision Particulars	Issued For Approval	Approved By	Robin Virani

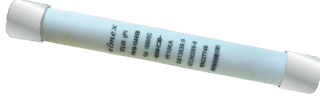

Client/Developer	:	
EPC Contractor	:	
Consultant Name	:	
Project Name		
Title	GTP of 1500V DC PV Solar Straight Inline Fuse Connector Male without Fuse link	
PROJECT NO		REV.
DOC.NO		00
		SHEET
		1 of 4

**Note:-** All rights reserved. The documents contain proprietary information which is protected by copyright. No part of this documents may be reproduced, translated in computer language, or transmitted in any form whatsoever without the prior written consent to Elmex Electric Pvt Ltd, Vadodara



EMPV4IFCM1500

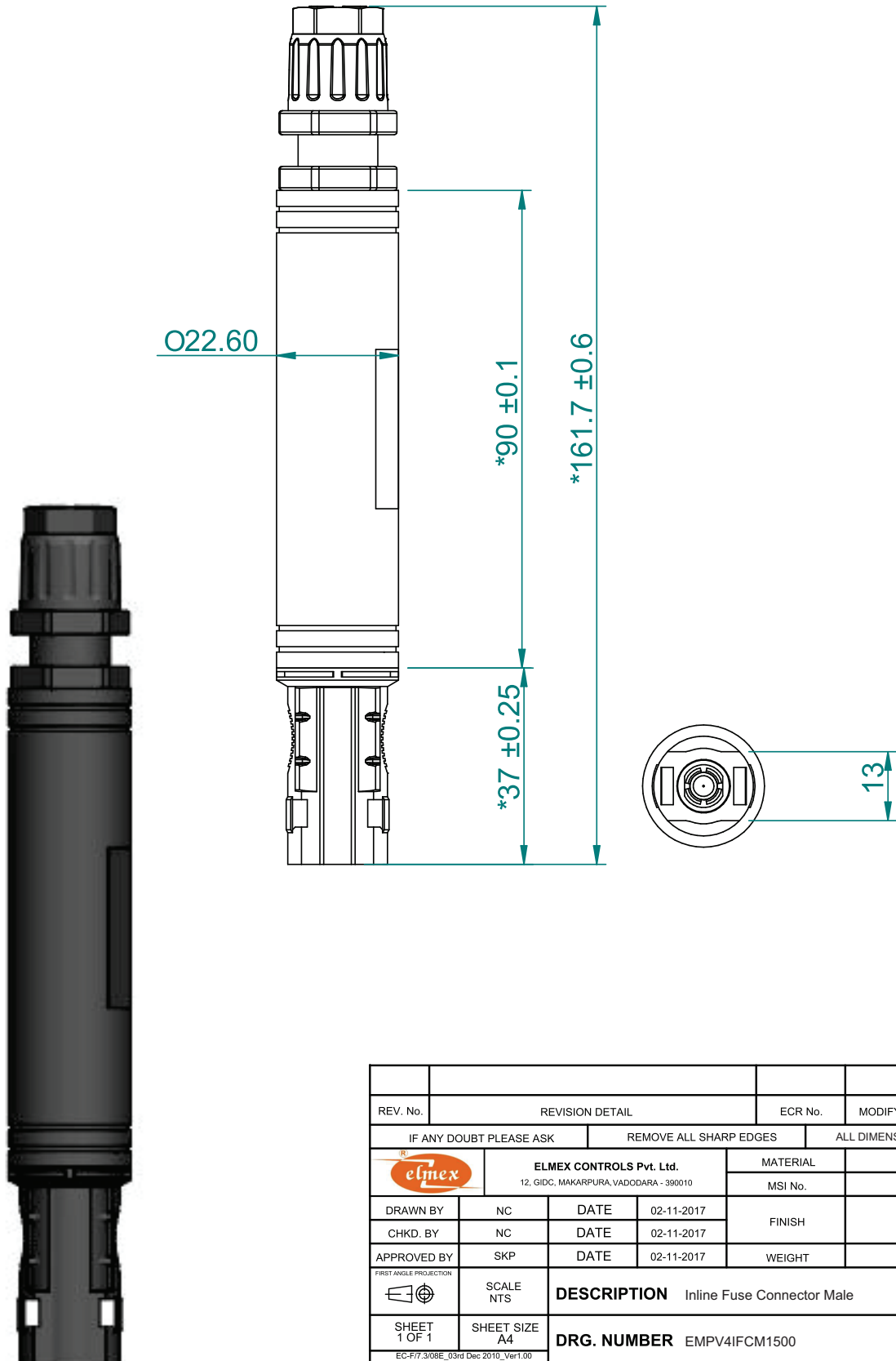
Sr.NO	Technical Parameters for EMPV4IFCM1500	
1	Factory Inspection	Name of Supplier- Elmex Electric Pvt. Ltd. Factory Address- 134-135, GIDC ESTATE, POR - RAMANGAMD, VADODARA 391243, GUJARAT, INDIA.
2	Product Partcode	EMPV4IFCM1500
3	Rated Voltage	1500V DC
4	Rated Current (TUV)	30A
5	Rated Impulse Voltage	16kV
6	RMS withstand Voltage	8kV
7	Protection Class	Class II
8	Application Class	A
9	Flammability Class	UL94-V0
10	Insulating Material	NORYL 9406P PPE+PS
11	Pollution Degree	3
12	Degree of Protection	IP68 (Mated Condition)
13	Over voltage Category	III
14	Lower Ambient Temperature	-40°C
15	Upper ambient Temperature	+85°C
16	Upper Limit Temperature	+110°C
17	Termination and Connection	Crimped Connection
18	Suitable DC PV Cable Size	2.5 mm <sup>2</sup> , 4 mm <sup>2</sup> , 6 mm <sup>2</sup>
19	Metal Contact Pin material	Copper with Tin Plating
20	Stripping Length	8mm-10mm
21	Insertion Force	≤50N
22	Withdrawal Force	≥50N
23	Salt mist Spray Test	IEC60068-2-52, Severity 6
24	Locking System	Snap In
25	Tool require for Opening and Tightening	Part code:EPVOS-S 


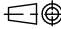
Sr.NO	Technical Parameters for EMPV4IFCM1500	
26	Fuse Link Suitable Size	<p data-bbox="857 327 1013 359"><math>\phi</math> 10 x 85mm</p>  <p data-bbox="857 499 1003 531">EPVFL1500</p>
27	Tool Required for Crimping	 <p data-bbox="850 783 1024 814">Part code:ESCCT</p>

\* Do not connect Straight Inline Fuse Connectors directly in MPPT of String Inverter.

\*\*Technical specifications may change in line with Technical Advances and industry standards.

# 1500V DC Straight Inline Fuse Connector Male



REV. No.	REVISION DETAIL				ECR No.	MODIFY BY	DATE
IF ANY DOUBT PLEASE ASK		REMOVE ALL SHARP EDGES			ALL DIMENSIONS ARE IN "mm"		
		ELMEX CONTROLS Pvt. Ltd. 12, GIDC, MAKARPURA, VADODARA - 390010		MATERIAL			
				MSI No.			
DRAWN BY	NC	DATE	02-11-2017	FINISH			
CHKD. BY	NC	DATE	02-11-2017				
APPROVED BY	SKP	DATE	02-11-2017	WEIGHT			
FIRST ANGLE PROJECTION 		SCALE NTS		DESCRIPTION    Inline Fuse Connector Male			
SHEET 1 OF 1		SHEET SIZE A4					
EC-F17_3/08E_03rd Dec 2010_Ver1.00				DRG. NUMBER    EMPV4IFCM1500		REV 0	